



# ROCK EAGLE 4-H CENTER

## PIONEER LIFE

### VOCABULARY

#### ROCK EAGLE'S ENVIRONMENTAL EDUCATION FIELD STUDY

- Drawknife:** a carpenter's tool used to shave/shape wood and/or smooth wood.
- Eastern White Pine:** an important native tree which was
- Red-Cedar:** useful to pioneers for building structures because of its resistance to decay
- Froe:** a tool used for making shingles from quartered wood
- Maul:** club like tool used to hit the blade end of the froe into the quartered wood to make a shingle
- Pole Barn:** pioneers used this structure to work beneath with their tools
- Saw Set:** teeth of a saw were alternately bent outward, making the cut a fraction of an inch wider than the blade to minimize binding the saw

*Making the best better!*



# ROCK EAGLE 4-H CENTER



## PIONEER LIFE

### PRE & POST TRIP ACTIVITIES ROCK EAGLE'S ENVIRONMENTAL EDUCATION FIELD STUDY

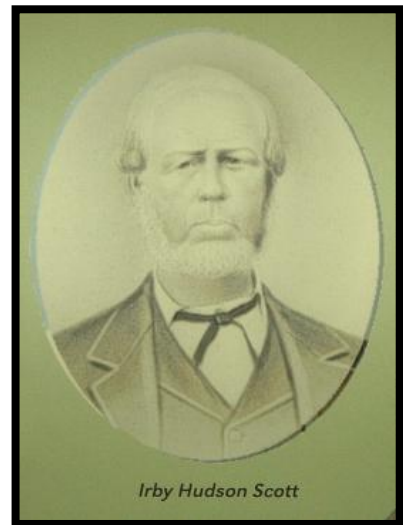


### **Compare pioneer times (early 1800's) to now**

Find the difference between our lifestyle and theirs. Make a list of these differences and then think about how pioneers may have lived without the luxuries we take for granted now. This may require a little research as well.

### **Journals**

Have students write a detailed journal of all the things they do during one day. Ask the students to question their grandparents about a typical day when they were young. Allow the students to compare the differences. Have students ask their grandparents whether they know what a typical day was like for their grandparents. Now the students can compare their typical day to their grandparents and great-grandparents typical day. This allows the student to see how American lifestyle has changed from 1850's to 2000's. What will a typical day be for the student's grandchildren?



*Making the best better!*

Rock Eagle 4-H Environmental Education. P: 706-484-2862 [www.rockeagle4h.org](http://www.rockeagle4h.org) [reagle@uga.edu](mailto:reagle@uga.edu)