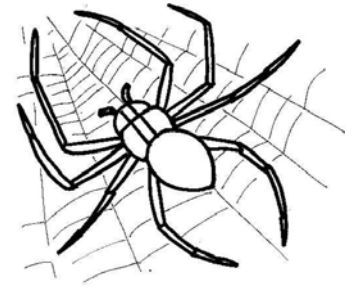


# Insects



## True or False

1. \_\_\_\_\_ A spider is an insect.
2. \_\_\_\_\_ There are 200,000,000 insects for every one person on Earth.
3. \_\_\_\_\_ Insects first appeared 300 million years ago.
4. \_\_\_\_\_ Beetles cannot fly.
5. \_\_\_\_\_ Insects today look completely different than they did millions of years ago.

## Short Answers

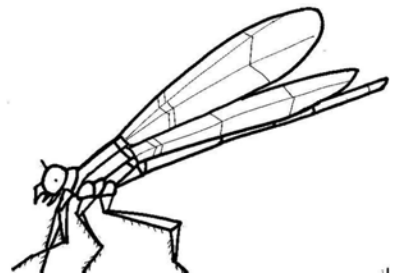
1. List some ways insects communicate with each other.
2. What are two ways insects help people?
3. What are two ways insects are harmful to people?
4. What do an insect's bright colors mean to others?
5. What are two reasons insects use chemical signals or pheromones?

***Making the best better!***

Find the words that go in the blanks by using the puzzle.

G	M	E	T	A	M	O	R	P	H	O	S	I	S	B
T	K	Y	E	C	O	E	P	Q	Z	P	C	R	S	D
E	H	C	C	A	T	E	R	P	I	L	L	A	R	R
R	J	O	Z	X	Q	W	O	L	M	D	D	H	Q	A
M	G	M	R	D	O	D	B	A	B	W	G	S	O	G
I	E	P	R	A	B	D	O	M	E	N	I	C	A	O
T	B	O	Z	E	X	O	S	K	E	L	E	T	O	N
E	W	U	A	H	Y	L	C	P	S	Q	Y	S	C	F
S	F	N	O	U	R	H	I	L	R	I	Y	M	P	L
M	A	D	T	L	E	G	S	T	P	T	R	Z	Z	Y

- The larvae or moths and butterflies are called \_\_\_\_\_.
- Insects have six \_\_\_\_\_.
- On the outside of an insect's body is the \_\_\_\_\_, a supporting structure.
- The \_\_\_\_\_, \_\_\_\_\_, and \_\_\_\_\_ are the three parts of an insect's body.
- The \_\_\_\_\_ is the straw-like mouth of a butterfly.
- Many insects have a \_\_\_\_\_ eye with many different facets.
- \_\_\_\_\_ build high-rise colonies.
- A \_\_\_\_\_ lays its eggs in water.
- Egg, larva, pupa, and adult are the stages of a complete \_\_\_\_\_.
- \_\_\_\_\_ produce honey to feed their young.



*Making the best better!*